



SUCCESS STORY - MINING

TURNKEY® Rhino

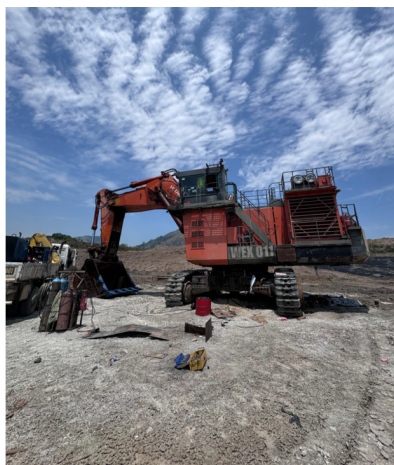
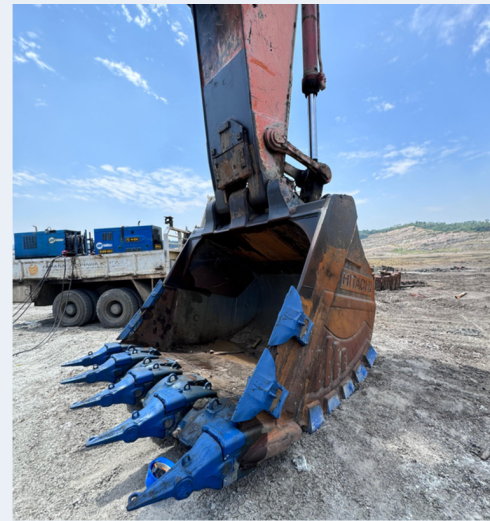
5 x TKN17 15120 A10°PE with TK WH 70 & TKSH EXC 380 120 shrouds

Indonesia
Extraction of limestone
HITACHI EX1900 Excavator - 191T



CUSTOMER'S OBJECTIVES

The customer was looking for better soil penetration, so we redesigned our PE shape to ensure it was more penetrating and self-sharpening. They also needed to increase productivity by limiting machine downtime, and to ensure safety when changing teeth. The machine extracts the barren material, which is hard clay, to penetrate the coal vein.



“ RESULTS

Thanks to the optimised shape of the PE tooth, the customer has better penetration, providing good resistance to impact. In addition, the extra-long-life adapters and shrouds significantly reduce machine downtime. Finally, bucket loading is optimised and the teeth are very easy to assembly and disassembly. Our customer has already equipped 2 HITACHI EX 1900 machines.

www.turnkeyteeth.com

04/09/2024

